



## WAREHOUSE/FLEX

12,000 SF AVAILABLE

## BUILDING FEATURES

- » Built in 2014
- » Zoning - Light Industrial
- » Pre-engineered steel construction
- » 24' clear height
- » Includes 2,940 SF of air conditioned office
  - » 1st floor: 1,470 SF
  - » Mezzanine: 1,470 SF
- » Outdoor balcony located off the mezzanine office suite

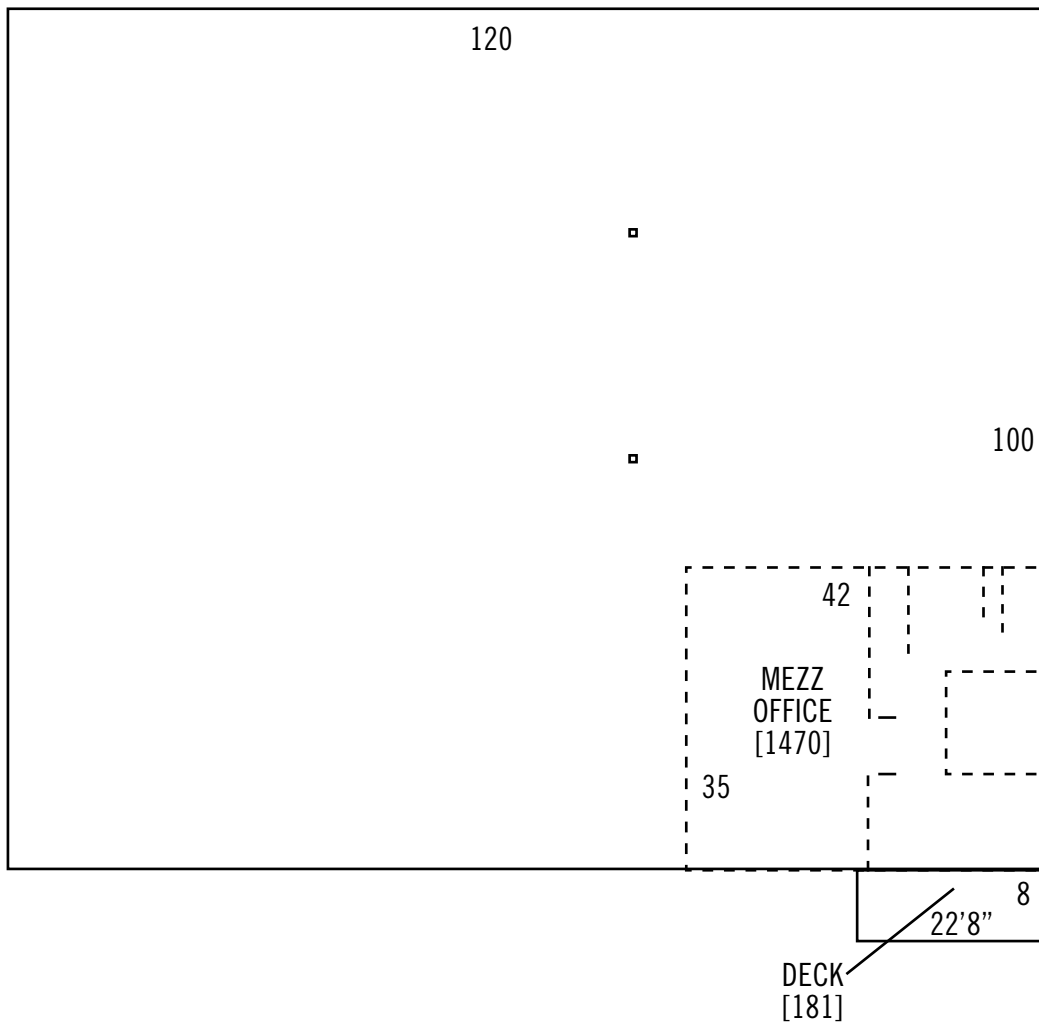
## LEASE RATE

» \$6.95 per square foot NNN

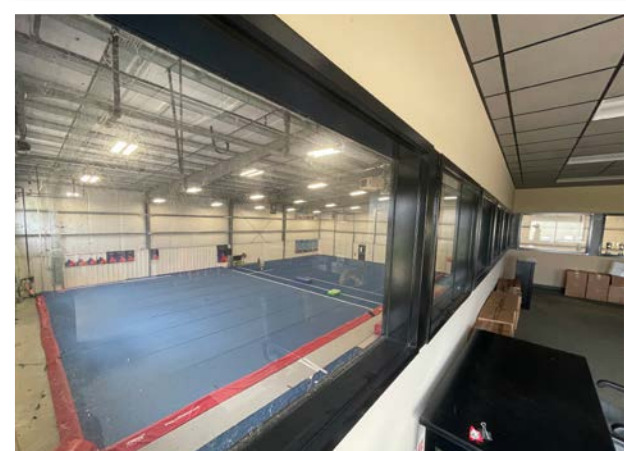
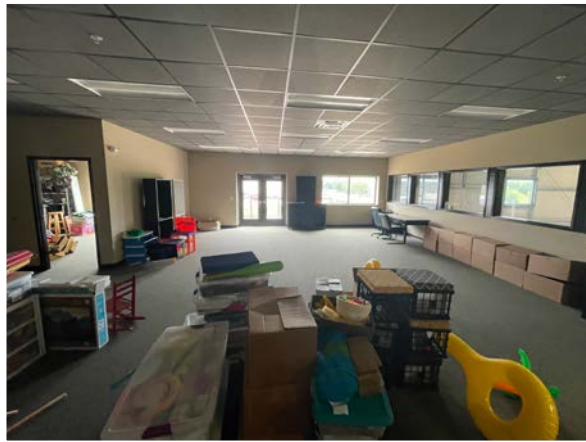
- » Easy access to Hwy 30 & I-380
- » Great visibility
- » Four 10' wide by 12' high drive-through doors
- » 3 multi-stall restrooms
- » 44 parking spaces
- » 240/120 volt; single-phase, 300 amp service
- » Wet sprinkler system
- » 4" reinforced concrete floor
- » Site size: 1.6 acres

Information contained here deemed reliable but not guaranteed by Landmark Brokerage, Inc.

FLOOR PLAN



Information contained here deemed reliable but not guaranteed by Landmark Brokerage, Inc.



Information contained here deemed reliable but not guaranteed by Landmark Brokerage, Inc.



Information contained here deemed reliable but not guaranteed by Landmark Brokerage, Inc.

9550 Hickman Road // Suite 100  
Clive, Iowa 50325

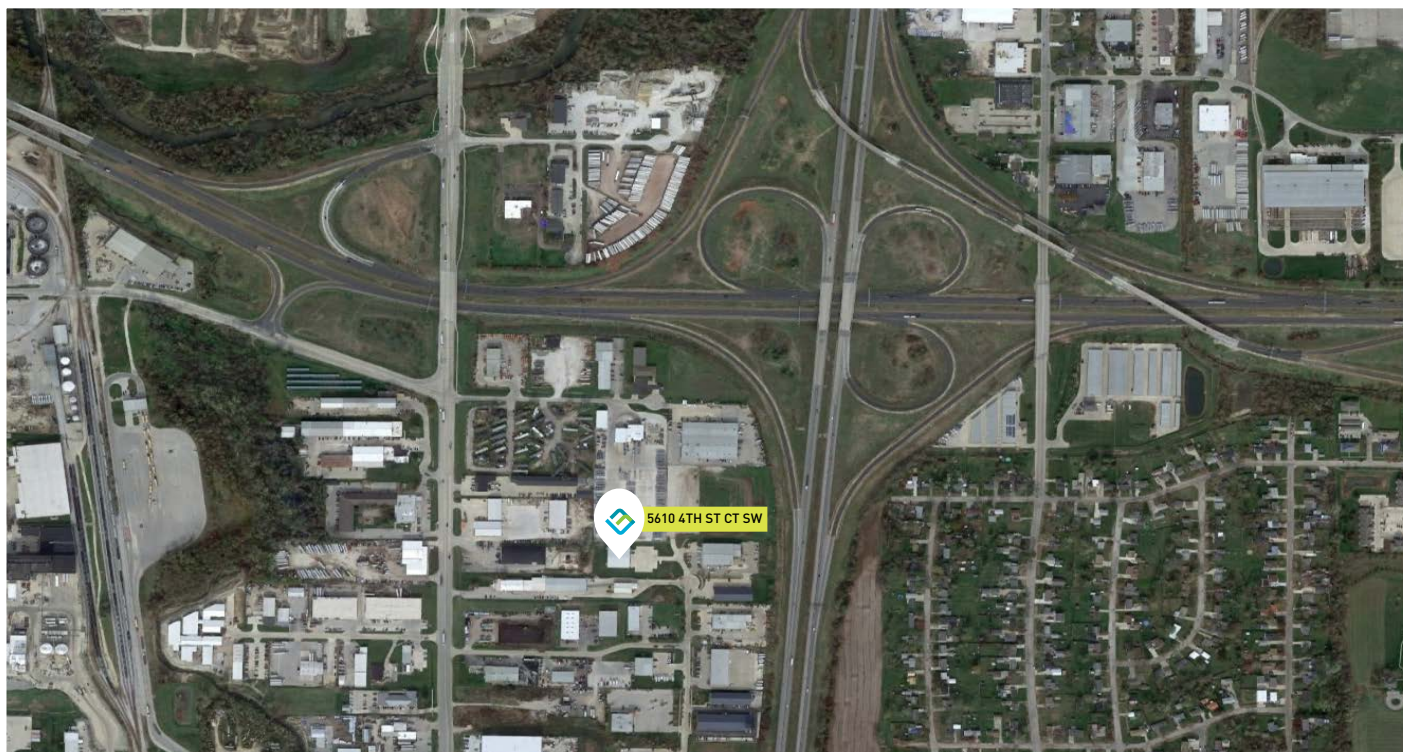
**Mike Bonnett**

P. 515.986.5994

C. 515.865.6086

E. mbonnett@lmcompanies-inc.com

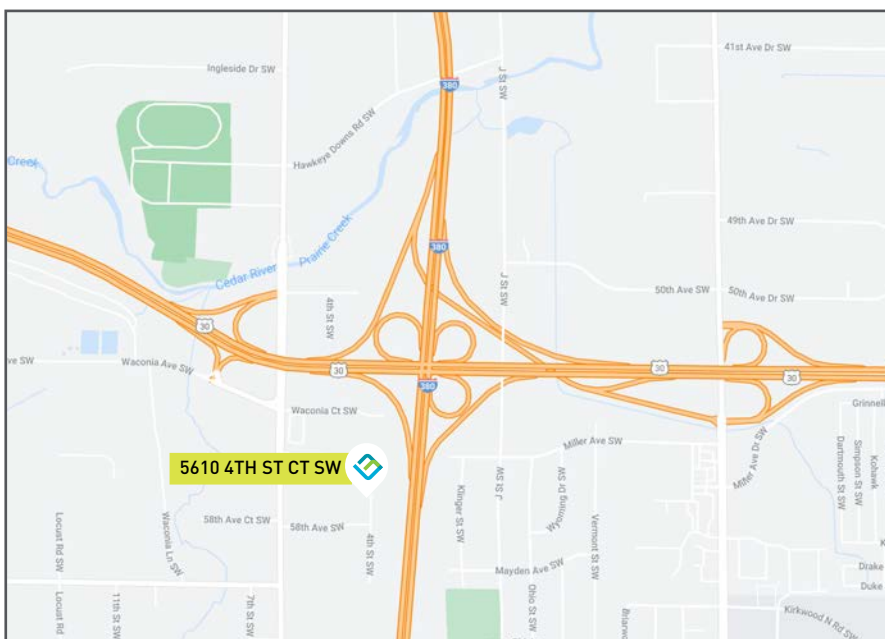
[lmcompanies-inc.com](http://lmcompanies-inc.com)











## DISTANCE:

THIS FACILITY IS CONVENIENTLY LOCATED OFF HIGHWAY 30 IN CEDAR RAPIDS, IA.

- » < 1 Mile South of Highway 30
- » 16.1 Miles North of I80 & 218 Interchange
- » 60 Miles Southeast of Waterloo
- » 80 Miles Southwest of Dubuque



Information contained here deemed reliable but not guaranteed by Landmark Brokerage, Inc.

		<u>3 miles</u>	<u>5 miles</u>
	Population	25,459	80,556
	Median Household Income	\$55,734	\$55,944
	Median Age	30.7	34.3
	Total Businesses	1,166	3,548
	Total Employees	30,066	79,268
	Owner Occupied Housing	65.3%	63.2%
	Median Net Worth	\$99,950	\$108,868
	College Graduate +	17.4%	19.4%

Source: ESRI 2022 Estimates

Information contained here deemed reliable but not guaranteed by Landmark Brokerage, Inc.